

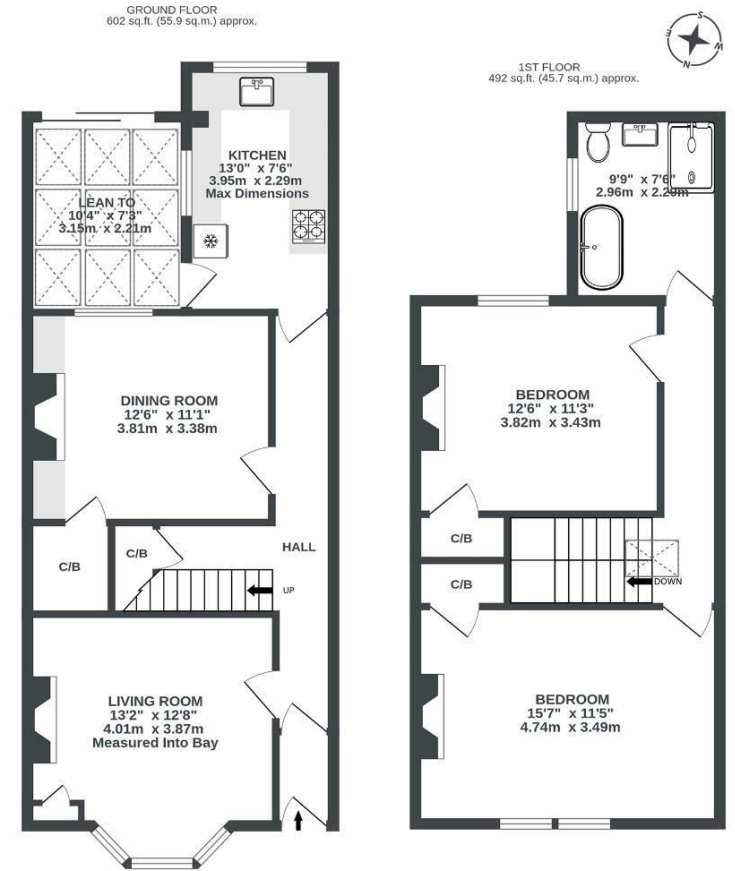
Boardwalk

# Church Road

ST. GEORGE, BRISTOL

## Church Road ST GEORGE

APPROXIMATE FLOOR AREA  
101.6 SQM / 1093 SQFT



Illustrations are for reference purposes only, measurements are approximate, not to scale.

Boardwalk

# Church Road

ST. GEORGE, BRISTOL

£

£400,000

ZZZ

2 Bedrooms



BS5 8AF



1 Bathrooms

*"I always appreciate the peace and quiet that I find when I close the front door, and have loved sunny evenings in the conservatory, with the doors open to the garden. Also hosting family for meals in the garden, and the amazing privacy there amidst the green lushness."*

